



Biology: Required Practical 1



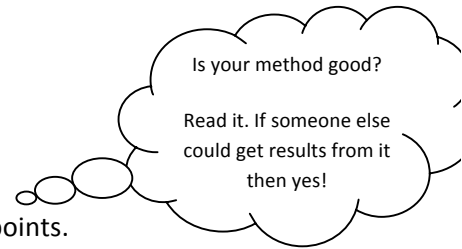
🍏 What is this required practical about?

.....

🍏 Label the equipment above.

🍏 Think about how you carried out this practical.

Write a logical and comprehensive method, using numbered bullet points.



🍏 How would you present your results for this practical?

.....

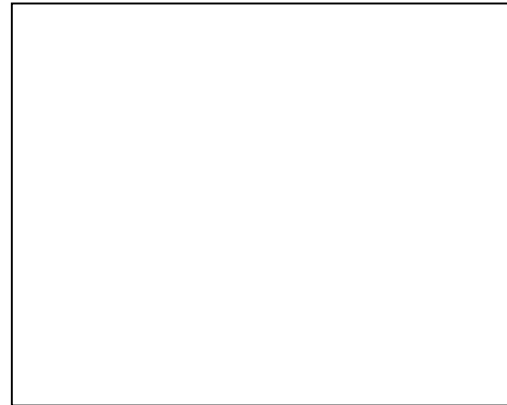
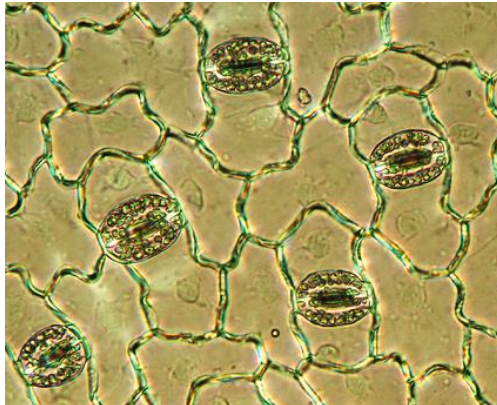
.....

🍏 Recall the relevant equation.

.....

.....

- Below is a picture of stomata on the bottom of a leaf. From the diagram, produce your own labelled scientific drawing.



- Below is a picture of graticule, these can be placed on your eye piece or stage and used to measure the length of a bacterial cell. Explain how.

.....

.....

